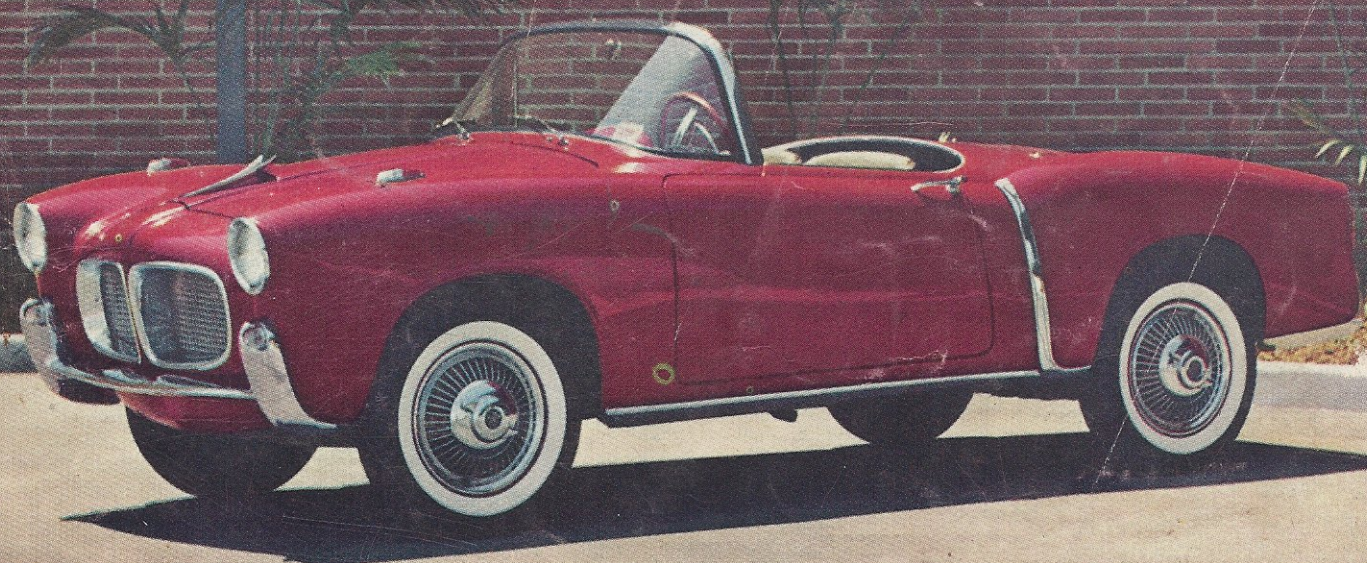


ROAD & TRACK

K 10
9/57

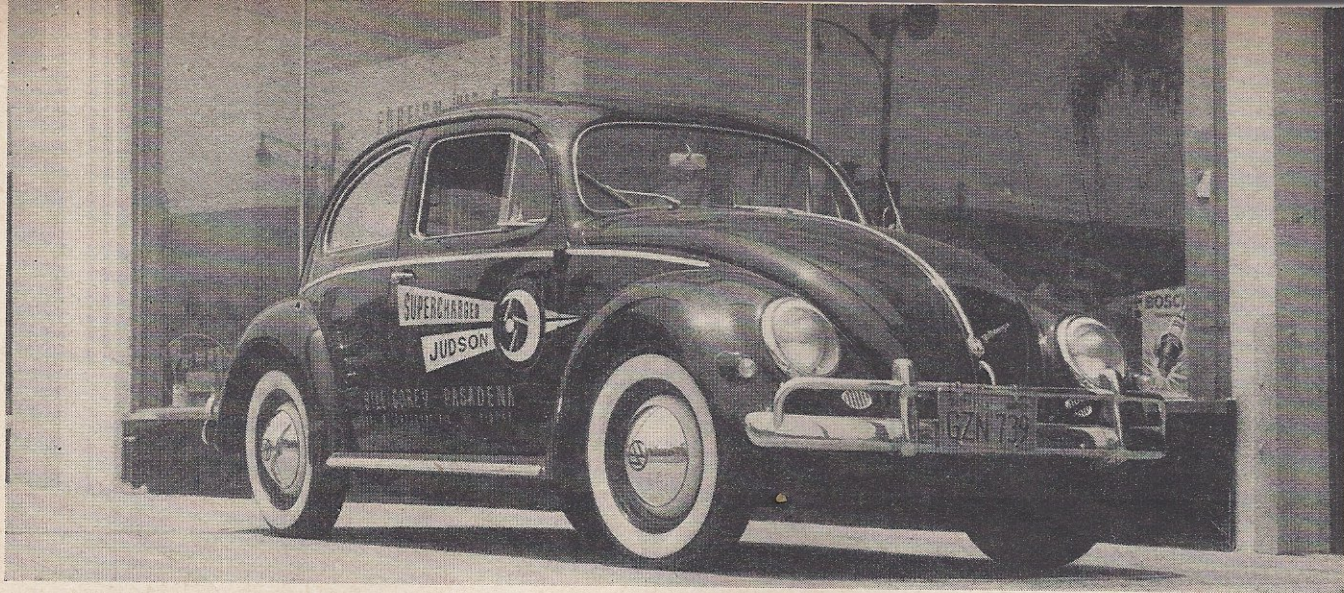
THE MOTOR ENTHUSIASTS' MAGAZINE

8/1/57



September 1957

35c the copy



ROAD TEST **JUDSON-VW**

JUDGING by the volume of our technical correspondence on the subject, the question of whether or not to supercharge is a burning issue with several thousand VW owners.

A road test report, involving at most a few hundred miles, cannot hope to cover adequately the questions regarding durability and longevity. However, we can determine the exact amount of performance gain, and we can and shall deal with the theoretical aspects of supercharging from the standpoint of engine wear and tear.

Nearly two years ago (October, 1955) we tested the Swiss-made MAG supercharger installation on a VW sedan. This is a well made but expensive kit, and the boost in performance was worth-while but not sensational. We have also driven two cars equipped with the Fageol "Pepco" supercharger. This unit really gives a boost (0 to 60 in under 16 seconds) but it is definitely noisy and, as we shall explain later, it probably should be run at a lower pressure.

The Judson supercharger is a good all-around compromise, with enough manifold boost (about 5 psi at peak revs) to give a worth-while performance gain. In our experience, which includes driving three such cars, the performance varies somewhat from car to car and from year to year. A well tuned

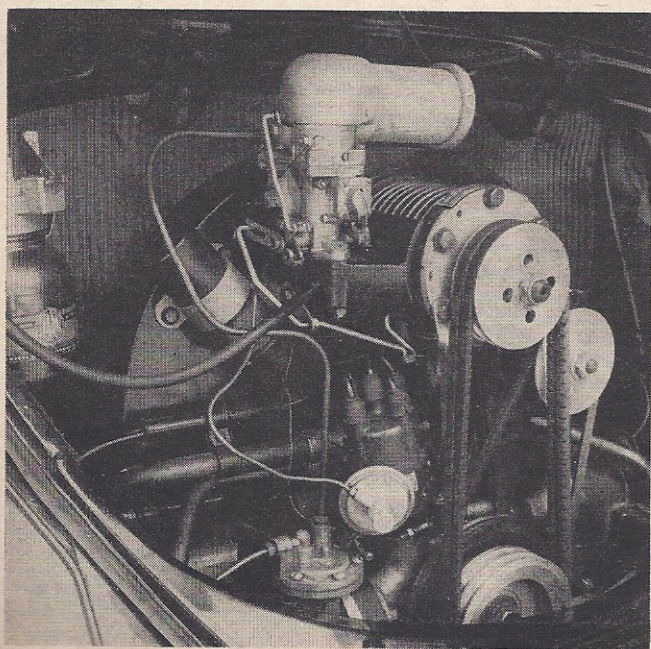
1957 VW, blown, can improve upon the figures quoted in this report. However, a comparison table gives a quick summary:

	Stock	MAG	Judson
top speed, avg.	70.2	74.5	83.8
0-60 mph	28.0	22.0	18.0
ss 1/4	23.2	22.4	19.8
lb/ton (4th)	140	160	170

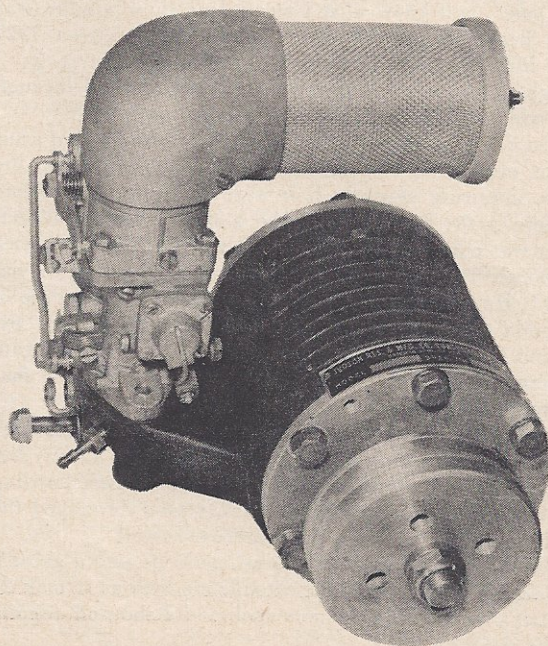
Two high-speed runs gave identical times equivalent to 83.8 mph. The speedometer stood nearly straight down, at approximately 87 mph. Bill Corey, our "Tune-Up Clinic" contributor, is Western distributor for Judson, and the car was his demonstrator. He reports speedometer indications on level roads of well past what would be 90 mph (the speedo reads only to 80) but a VW is well known for its good response to a light tail wind.

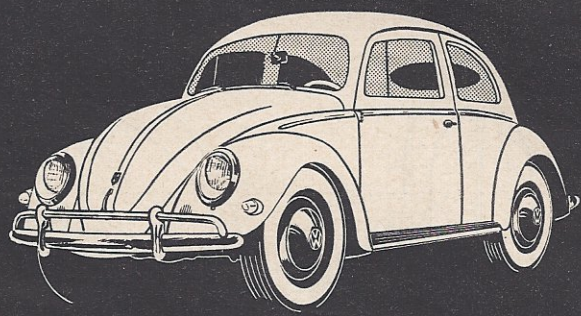
The rate of fuel consumption depends, even more than usual, on how the blown car is driven. Driven normally, under relatively steady cruising conditions there is a drop of only 2 or 3 mpg. Driven really hard, as during the test, it uses fuel at the rate of 25 mpg.

A Volkswagen owner can detect a slight change in the character of the interior sound when the supercharged engine



PHOTOGRAPHY: POOLE





VOLKSWAGEN SEDAN
with Judson supercharger

is running. However, the difference is more in note than in volume, for the Judson is unobtrusive at any speed.

The big question with most prospective purchasers is whether the engine will stand up to the extra pressure of the blower, and whether the time between overhauls will drop.

Unequivocally, a driver who consistently uses the extra performance at all times must expect more wear and tear. On the other hand, an owner who will drive the Judson-VW with reasonable discretion will find it hard to prove that engine life or durability has been sacrificed to any measurable extent. For example: steady cruising at 60 mph requires about 13.8 bhp, regardless of whether the engine is blown or not.

A supercharger supplies the cylinders with more air and fuel than they could normally induct via atmospheric pressure. This extra air and fuel is what gives the added bhp and torque, but it is not required, or used, under steady-speed cruising. However, when the accelerator is pushed to the floor, the supercharged engine sustains heavier loads, and this condition is worth closer examination. It has been shown* that an engine supercharged at 7.5 psi manifold pressure gives the

**the supercharger gives
a kick where it's needed**

same increase in peak cylinder pressure as does a change in compression ratio from 5.00 to 8.00:1. But the mean (or useful) cylinder pressures go up by 54% for the blown cylinder, as compared to only 9.5% for the compression ratio rise.

All engines are designed to take an overload for short periods. The VW unit, with its restricted valve and port areas, is certainly a de-tuned engine with an even larger-than-normal reserve for overload.

However, in the case of the VW, there are two special circumstances which must be considered: the crankshaft and the air cooling. The VW crank is not designed to sustain over-speeding. For that matter, neither is the valve gear. The crank is made from forged steel, to give proper grain flow, and the principal alloying elements are .35% carbon, 1.1% manganese, and 1.2% silicon. All the bearing surfaces are induction-hardened to about 57 Rockwell-C. Although the blown VW engine will actually attain 5500 rpm, it is highly recommended that a speed of 3400 rpm be held as a limit.

We used 4500 rpm to get the best possible performance, but in our tests we also took data using 3400 rpm as a limit. The corresponding speeds in each gear are 16, 31, 47 and 70 mph. The results are plotted as a dotted line on the acceleration graph. Performance is reduced very little:

	4500	3400
0-30	5.4	6.0
0-40	8.1	9.7
0-50	12.5	14.7
0-60	18.0	21.0
ss 1/4	19.8	21.0

The cooling limitation mentioned is based on the fact that, in any given engine, the heat loss is directly proportional to the amount of fuel being consumed. When you use the extra Judson performance, you use more fuel and put more load on the cooling system. The VW cooling arrangement is not disadvantageous in any way except that the cooling fan runs at twice crankshaft speed. Therefore, when the factory-recommended maximum rpm of 3400 is reached, the fan is turning at 6800. Any fan speed above this figure is inadvisable because fan efficiency begins to fall off.

In short, we recommend the Judson supercharger with reservations. Do not exceed 3400 rpm except on rare occasions, and do not drive for long periods (as in the mountains) with full throttle. On a sensibly driven VW, the extra urge of the Judson supercharger is well worth-while and a definite safety factor.

*"Supercharging for Increased Performance," *Product Engineering*, October, 1954.

SPECIFICATIONS

List price (supercharger)	\$149.50
Wheelbase, in.	94.5
Tread, f/r	50.8/49.2
Tire size	5.60-15
Curb weight, lb	1660
distribution, %	43/57
Test weight	1980
Engine	flat 4, ohv
Bore & stroke	3.03 x 2.52
Displacement, cu in.	72.7
cu cm.	1192
Compression ratio	6.60
Horsepower (est.)	50
peaking speed	4000
equivalent mph	82.5
Torque, lb-ft (est.)	70
peaking speed	2200
equivalent mph	45.4
Gear ratios, overall	
4th	3.61
3rd	5.41
2nd	8.27
1st	15.8

PERFORMANCE, Mph

Top speed, avg.	83.8
best run	83.8
3rd (4500)	62
2nd (4500)	41
1st (4500)	21
see chart for shift points	
Mileage range	24/32 mpg

ACCELERATION, Sec.

0-30 mph	5.4
0-40 mph	8.1
0-50 mph	12.5
0-60 mph	18.0
0-70 mph	28.0
Standing start 1/4 mile	19.8

TAPLEY DATA, Lb/ton

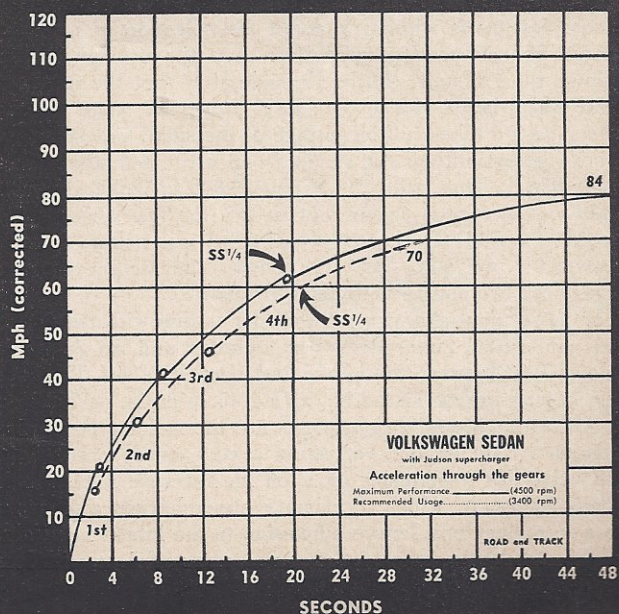
4th	170 @ 42 mph
3rd	270 @ 35 mph
2nd	400 @ 27 mph
1st	520 @ 17 mph
Total drag at 60 mph, 100 lb	

SPEEDOMETER ERROR

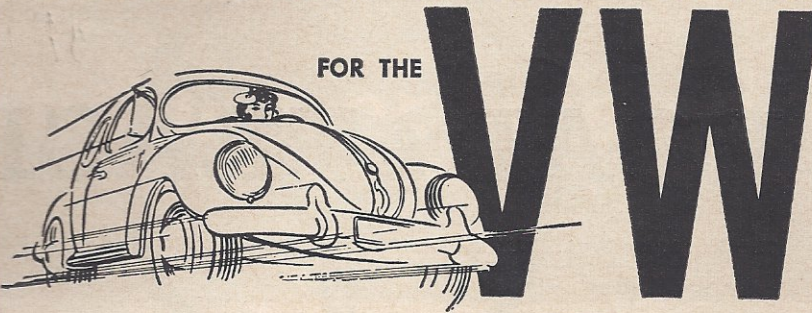
Indicated	Actual
30 mph	31.2
40 mph	39.2
50 mph	46.9
60 mph	56.0
70 mph	65.3
80 mph	75.0
87 mph	83.8

CALCULATED DATA

Lb/hp (test wt)	39.6
Cu ft/ton mile	61.9
Engine revs/mile	2910
Piston travel, ft/mile	1220
Mph @ 2500 ft/min.	123



WORLD'S FINEST ACCESSORIES



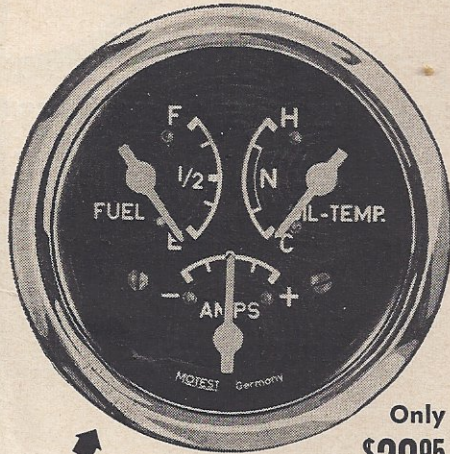
MotoMeter 3-in-1 Dash Instruments

(For 1956 VW and Later)

- GAS LEVEL GAUGE
- OIL TEMP. GAUGE
- AMMETER

ALL IN ONE 2 3/8" CHROME CASE

■ The world's most compact, all-electric instrument made especially for the VW and Karmann-Ghia. Accurate and reliable operation. Easy installation. Fits right into dashboard. Complete step-by-step installation instructions. 2 3/8" chrome case.



ACTUAL SIZE

Only
\$29.95

THESE SEPARATE, FULL-SIZE INSTRUMENTS ALSO AVAILABLE

Fuel Level Gauge for 1956 VW and Later, 40 mm.	\$14.95
Precision Ammeter, 60 mm.	4.95
Oil Temperature Gauge, 52 mm.	10.75
Chromed Under-Dash Mounting Bracket	1.75

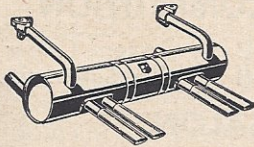


ABARTH Sweeps '57 Mille Miglia (1st, 2nd & 3rd!)

4-Barrel ABARTH Muffler

■ 1st, 2nd and 3rd place Mille Miglia 1957 winners used ABARTH mufflers. Now you can enjoy, on your own VW, the tremendous power increase and absolute reliability that have established ABARTH as the world's finest muffler. On hill-climbing, passing and acceleration you won't recognize your car after you have added the four-barrel ABARTH muffler! WARNING: Beware of imitations! Look for the ABARTH Scorpion Seal! Installation of the ABARTH is so easy you can do it yourself.

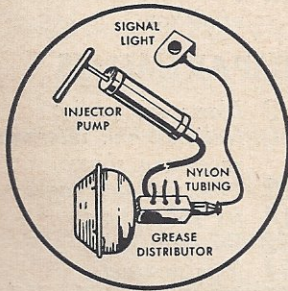
Model A-100, For '55 VW and Earlier. **\$32.50**
Deluxe Muffler for '56 and later, Model A-200, \$34.50



AUTOMATIC LUBRICATION MULTI-LUBER

■ No more searching for small lifts to fit your VW! No more careless attendants who force dirt into the grease fittings, and miss the hard-to-get-at fittings. You can now grease your own car in 4 seconds—for only 1/4¢—while you are driving (bearings in motion lubricate best)! Grease is forced into every fitting at 2000 pounds pressure. Pilot Light shows when lubrication is completed. Multi-Luber gives you that "just lubricated" ride every day, with absolute dependability (there is only 1 moving part). Easy installation.

\$29.95

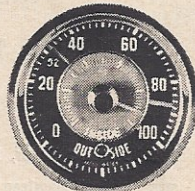


Automotive Indoor-Outdoor

AIR THERMOMETER

■ Now available in America! The world's only Indoor-Outdoor Automatic Thermometer. Indicates inside and outside air temperatures. Warning Light automatically signals ice conditions on the road. A terrific safety device! The instrument is illuminated, and can be installed in ANY car. 2 3/8" chrome dial.

TH-311-6V (For 6-Volt Systems)	\$9.95
TH-311-12V (For 12-Volt Systems)	\$9.95
Chromed Under-Dash Mounting Bracket	\$1.75



For Any Car!

WRITE FOR BOOKLET • DEALER INQUIRIES INVITED

FISHER PRODUCTS • 21-29 44th DRIVE • L. I. CITY, 1, N. Y.

LETTERS TO THE EDITOR

ARE WE SNOBS? . . .

In the May 1st issue of *Automotive Industries*, Joseph Geschelin says, "What are the reasons for the intensified demand for foreign cars? . . . Foremost is a matter of snob appeal . . ."

Geschelin is, of course, a Detroit product—but maybe it indicates that stupidity is more prevalent in Detroit than suspected!
Grants Pass, Ore. R. E. Howe

WHERE MONSTERS ROAM . . .

After reading several articles in the June issue, I came upon a series of cartoons depicting a pair of hicks in a car being run down by a monster VW. Not only is it a monster VW, but it appears to have people (?) in the bumper. Now this brings up several questions: (1) Is the VW a normal VW with little men on the bumper, and if so what are the hicks that the VW seems to be running over? (2) Is it a huge VW with its drivers in the bumper? (3) Has the cartoonist been having too much sun lately, or does he always draw things like that? Anyway, what is the VW, monster or not, doing running over rustics? I always thought VW drivers were good drivers.

Incidentally, I am planning to run my competition model Cyclops at Thompson, Conn., this season. I am not going any farther away from home for fear I might never arrive at my destination. Farmers are notorious for mistaking the Cyclops for some prehistoric predator . . .
Le Mans, Mass. Juan M. Misshift

THE DEAR, DEAD DAYS . . .

In the June issue there appeared on beautiful display, the 1937 Cord, Model 812, complete with performance data and other interesting information; and described as seen at the Sebring Race was the 1957 Corvette Super Sports, as it made its debut with magnesium body, 4-speed transmission, fuel-injection and Al-Fin drum brakes.

As not too many know, on September 16 and 17, 1937, a Cord 812—such as that described in the Salon section—was driven for 24 hours at Bonneville by three drivers, Jenkins, Updike and Oliver, at an average speed of 101.72 mph. While this was not over a difficult race course it certainly was a test of durability and design, and established an official American stock car record that stood for 18 years—until 1955. This car weighed 4200 lb, and the engine developed 170 horsepower. The distance traveled in this endurance trial was 2441.33 miles.

At Sebring, the winning car was driven by two drivers for 12 hours at approximately 85 mph over an approximate distance of 1025 miles. The Corvette Super Sports entry—very possibly unready or not yet perfected for such an endurance competition—developed a multiplicity of ailments and failed to finish the course. This latter car reported-